

# AsctGui Quick User Guide

December 1, 2005

This guide shows you how to submit and run applications in InteGrade using AsctGui. It assumes you have already started all other services of your grid.

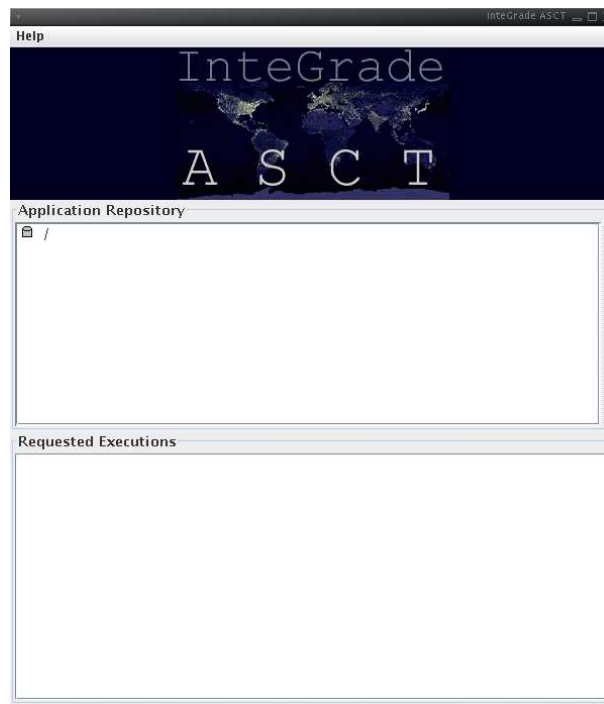
## 1 Starting AsctGui

To start AsctGui, enter in your InteGrade installation directory and type:

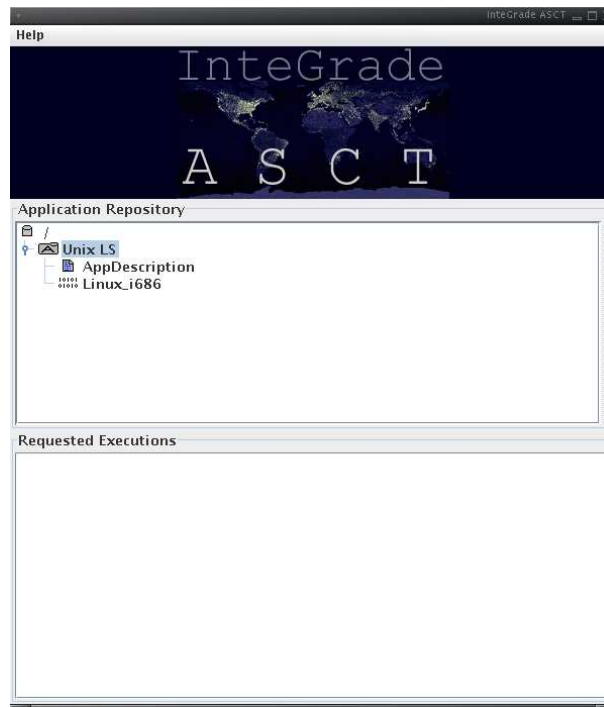
```
./startservices asctGui
```

## 2 Submitting an application

In the AsctGui main window, you will find two larger frames: *Application Repository*, and *Requested Executions*.

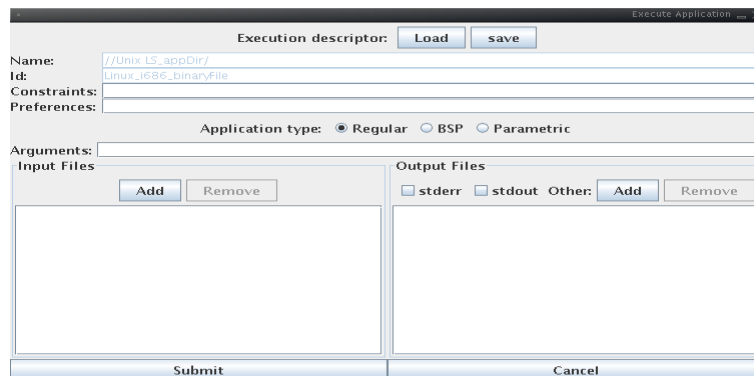


Click in a directory shown in the *Application Repository* frame and select “Register Application”. Enter the name of your application and click in “OK”. Click in the name of your application and select “Upload Application”. Click in “Browse”, select the binary of the application you want to run, click “Upload” on both windows. Your main window will now look like this (if you expand you applications folder):

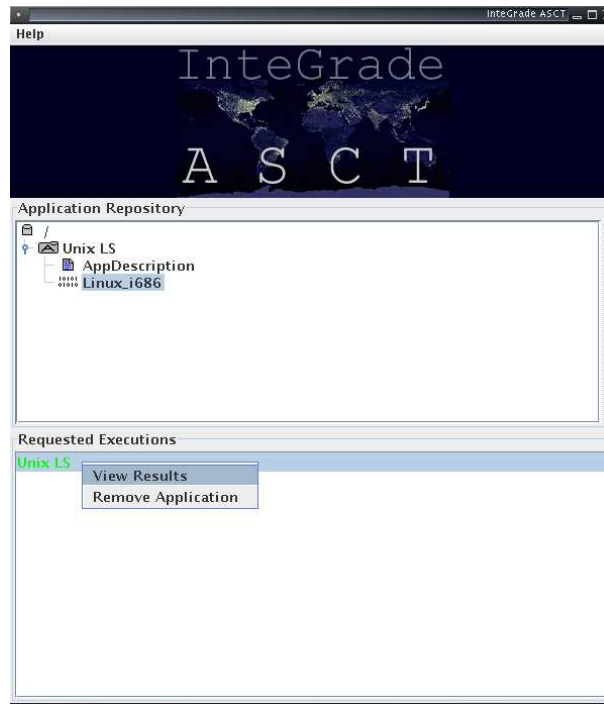


### 3 Running an application

Click in the name of the application you want to run and select “Execute Application”. Choose the application type and inform its arguments. If you choose a BSP application you need to inform the number of nodes in which it will be run. Select also the output data you want (stderr, stdout, or another external file) to be stored in AsctGui.



When you finish, click “Submit”. While application is running its name appears in blue into *Requested Executions* window. When its finished the name changes to green.



To check its results click in the application name and select “View Results”. The results will appear on another window organized by node number.

